





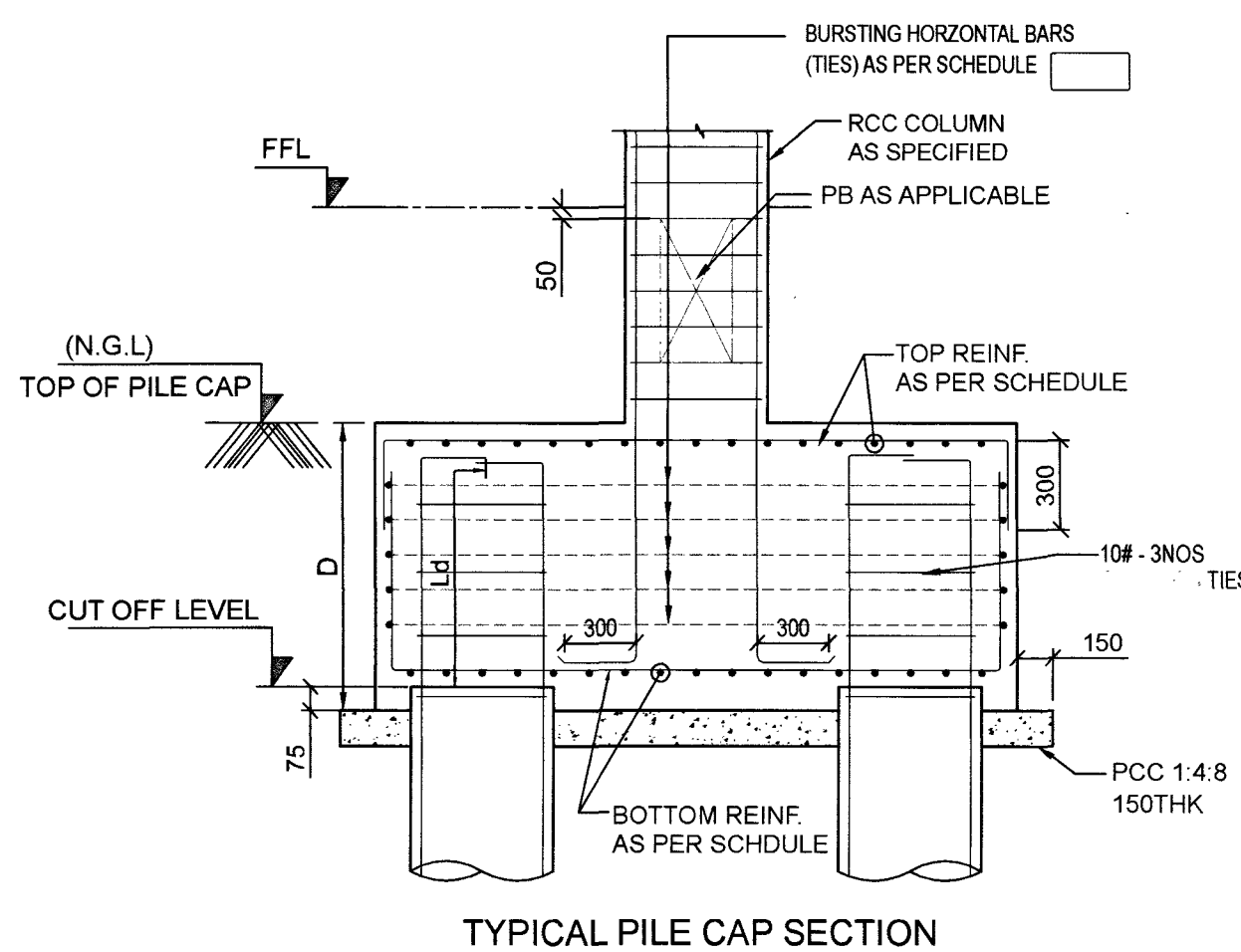
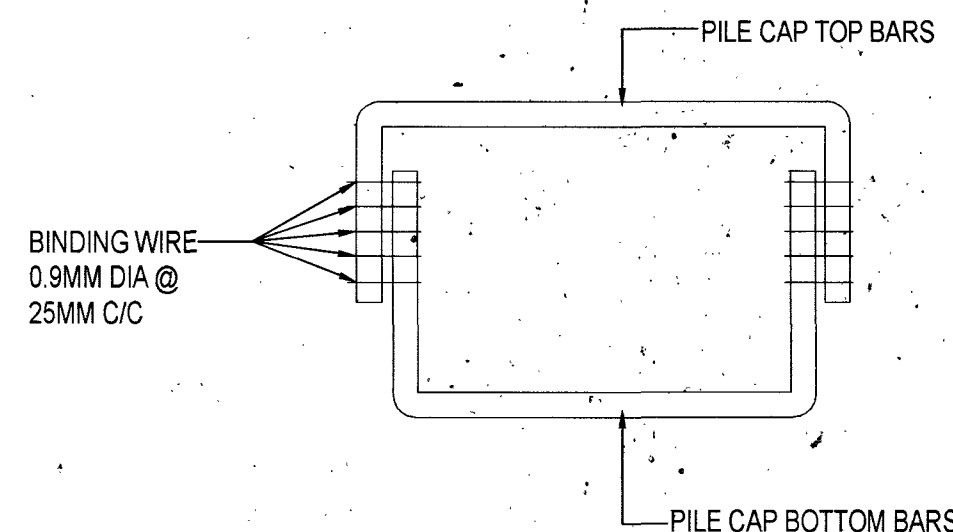


PILE CAP LAYOUT

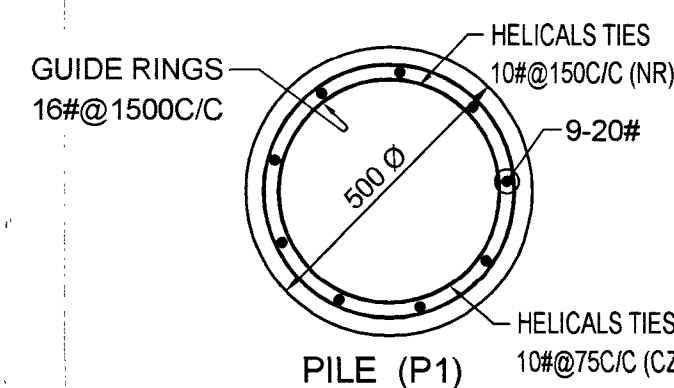
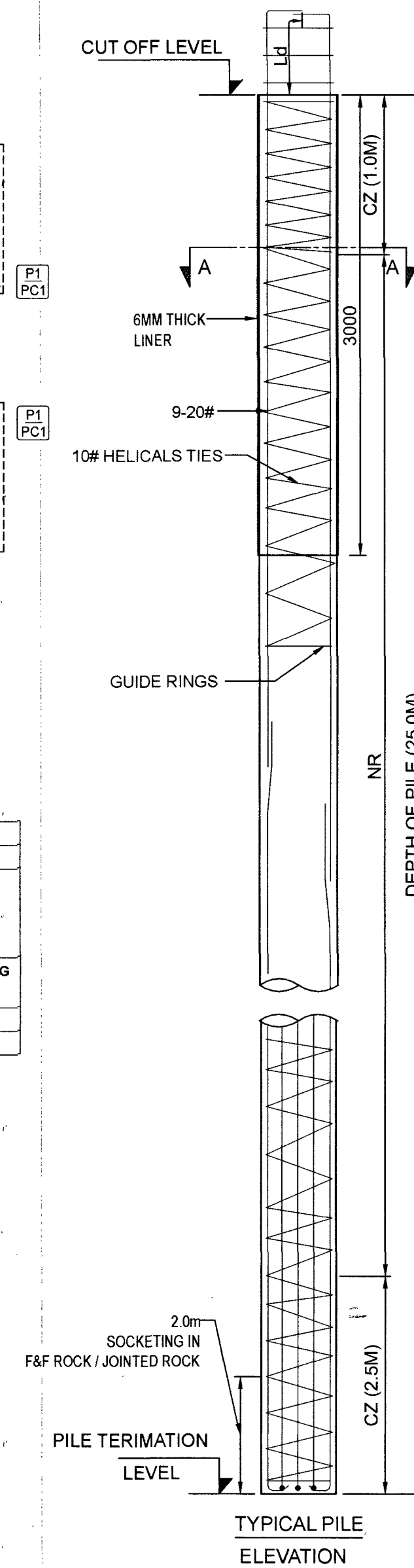
SCHEDULE OF RCC PILE CAPS																					
SLNO.	TYPE OF PILE CAP	PILE		SIZE OF PILE CAP			REINFORCEMENT IN PILE CAPS														
		TYPE	DIA	NO. OF PILES IN EACH PILECAP	LENGTH	WIDTH	DEPTH	BOTTOM BARS ALONG WIDTH 'B'		TOP BARS ALONG WIDTH 'B'		BOTTOM BARS ALONG LENGTH 'L'		TOP BARS ALONG LENGTH 'L'		BURSTING HORIZONTAL BARS (TIES) AT EQUAL SPACING		VERTICAL STIRRUPS ALONG WIDTH			
																					
								DIA#	SPACING C/C	DIA#	SPACING C/C	DIA#	SPACING C/C	DIA#	SPACING C/C	DIA#	NOS	LEGS	DIA#	SPACING C/C	
1	PC1	P1	500	6	3800	2300	1000	20	150	16	150	20	150	16	150	12	7	-	-	-	
2	PC2	P1	500	6	4150	2300	1000	20	150	16	150	20	150	16	150	12	7	-	-	-	



TYPICAL PILE CAP SECTION



DETAILS OF BINDING OF TOP AND BOTTOM BARS OF PILE CAP.



NOTES

1. ALL DIMENSIONS AND LEVELS GIVEN ARE IN MILLIMETERS UNLESS OTHERWISE SPECIFIED.
2. FIGURED DIMENSIONS ONLY SHALL BE FOLLOWED.

DATE	DESCRIPTION	SIGN
REVISIONS		

VETTED BY

ALL DETAILS HAVE BEEN THOROUGHLY CHECKED AND ARE IN COMPLIANCE TO STANDARDS, CODES, REGULATIONS IN RESPECT OF SAFETY, SOUNDNESS AND ECONOMY.

*[Signature]*

PROVN OF HANGAR AND ANNEXE BUILDING AT INS DEGA VISAKHAPATNAM

SCOOTER PARKING

PILE CAP LAYOUT

SHT NO.	S01	<b>HELIOS ENGINEERING CONSULTANTS</b> #38-34-66 FCI COLONY MARRIPALEM VISAKHAPATNAM - 530018
PRO NO.	2204/4	
SCALE	AS NOTED	
DRN BY.	KSS	
DATE	28-02-2023	

DESIGNED BY

*[Signature]*  
DV TRINADH RAO

CHECKED BY

*[Signature]*  
S SURYA  
MS (STRUCTURES)

**CHIEF ENGINEER (NAVY) VISAKHAPATNAM**

REF.DRG.NO : CEVZ/2022/WD-2120(S) (SP) Sht.No: 3

DESIGNS & DRAWINGS PREPARED UNDER CONSULTANCY FROM M/S HELIOS ENGINEERING CONSULTANTS AND VETTED BY ANDHRA UNIVERSITY

*[Signature]*

Kenshi Raman  
Lt Col  
SD 1 (Design)  
for Chief Engineer

*[Signature]*

Srinivas Nalla, IDSE  
CE (NF)  
Director (Design)  
for Chief Engineer